



■ Specification

Model	2P025-06	2P025-08
Fluid	Air, Water, Oil	
Acting	Internally piloted acting	
Type	Normally closed	
Orifice size(ϕ mm)	2.5	
Cv Value	0.23	
Port size	G1/8	G1/4
Viscosity limit	Under 20CST	
Operating pressure	0~0.7MPa(0~100psi)	
Proof pressure	1.05MPa(150psi)	
Materials of body	Nylon 66	
Seal material	VITON	
Min.activating time sec	0.05 sec and below	

■ Symbol



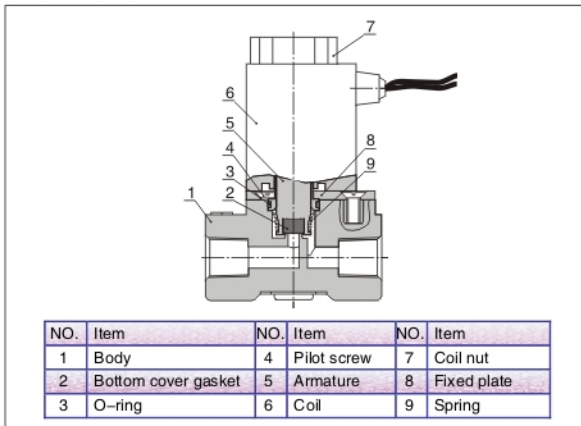
■ Product feature

- 1、 Direct acting and normally closed type 2/2 way solenoid valve can quickly and sensitively change the direction;
- 2、 It has compact structure, small size and light weight. It is easy to be installed and dismantled;
- 3、 The valve body is made of nylon 66. The heat resistance classification of coil is B step. The seals are made of VITON which is suitable for different kinds of fluid.
- 4、 The protection class of coil is IP65, and the electrical entry is grommet.

■ Specification of coil

Valve type	Power	Frequency (Hz)	Voltage range	Electrical entry	Power consumption (VA/W)	Insulation	Temp rise(°C)
2P025	AC	50	$\pm 15\%$	Terminal	7.0VA	Class B	35
		60					45
	DC	—	$\pm 10\%$	Grommet	7.0W		—

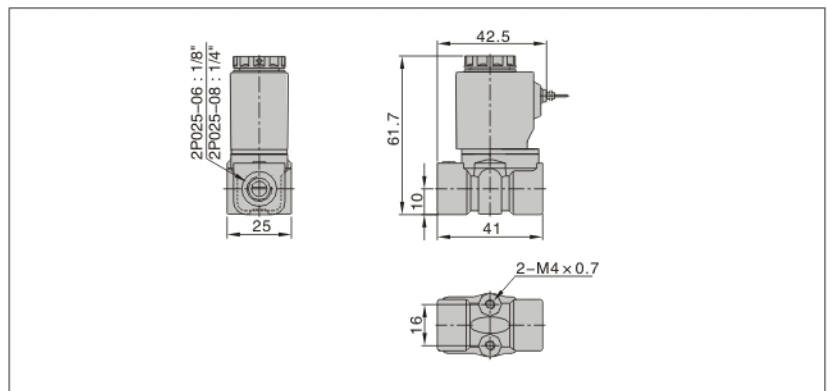
■ Inner structure



■ Ordering code

2P	025	—	08	—	A	—	G
Model	Orifice size		Port size		Voltage		Thread type
2P: 2 port 2 position solenoid valve (plastic steel type)	025: $\phi 2.5\text{mm}$		06: G1/8 08: G1/4		A: AC220V B: DC24V C: AC110V E: AC24V F: DC12V		G: G

■ Dimensions



■ Flow chart

